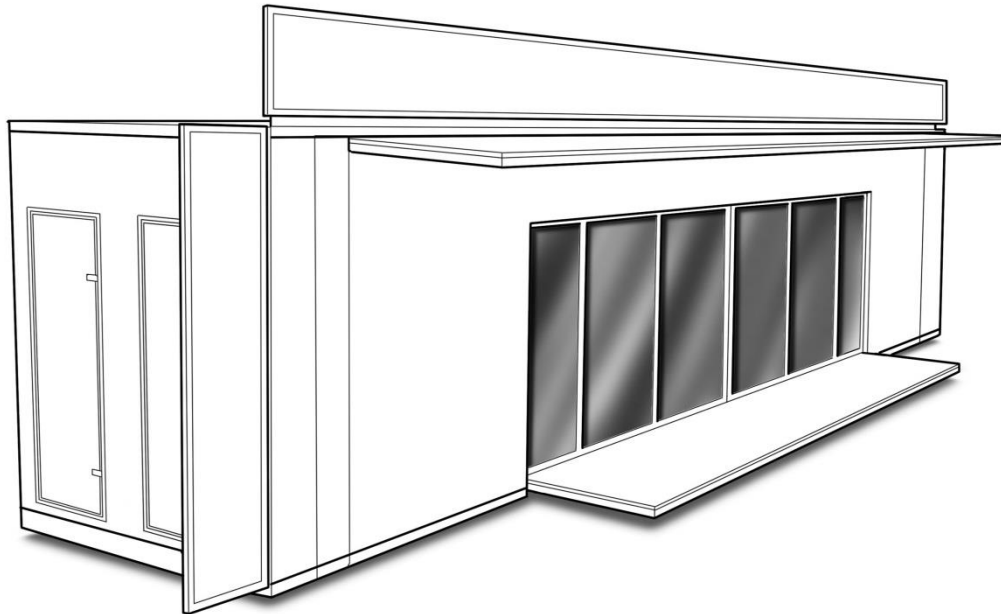




Titan 86 Specification Sheet



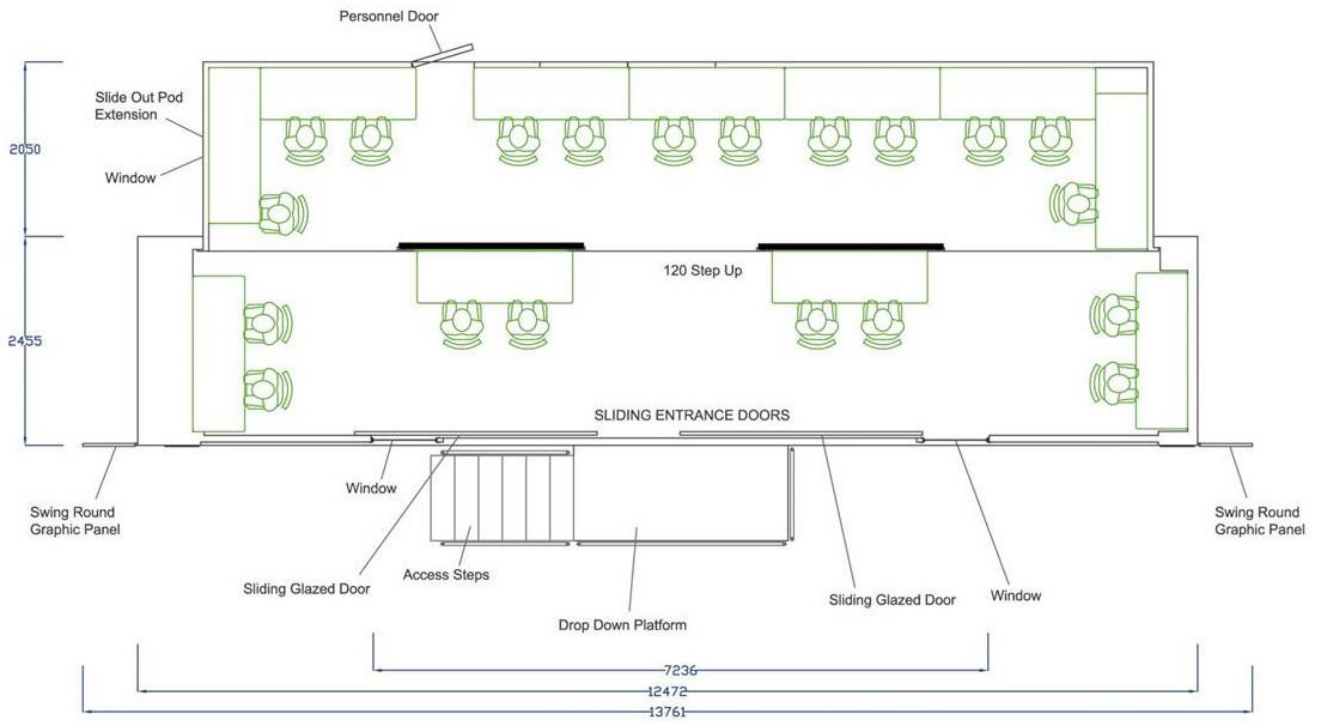
Titan 86, production office can be fixed on the trailer for deployment or demounted with its own integral hydraulic lifting system on the 13.6m unit. The unit has a pod that comes out of the rear of the unit to double the footprint of the unit. The unit has been recently refurbished and consists of an open plan area within the unit. There is a headboard and large areas for branding externally and internally. Power is from mains power throughout the trailer. AV and connectivity can be added. The unit can be fully deployed in 60 minutes and can be configured to your requirements.

Vehicle Features

- Demountable or fixed on trailer
- Open plan production/display inside
- Air-conditioning can be added
- 2 SES Unit Manager 60 minute set up
- Newly re-furbished in 2015



Titan 86 Specification Sheet



Size and Specifications

- Internal Floor space 55m²
- Internal Height in pod/gullwing 2260mm
- Internal Height main body 2500mm
- External Height 4.0m in transit
- Power requirements 1x 32 amp single phase connections
- Flooring (None slip wood effect safety flooring)
- Internal wall finish Clean grey carpet to walls
- External finish Clean white gloss finished ready for branding

