



## Titan 78 Specification Sheet



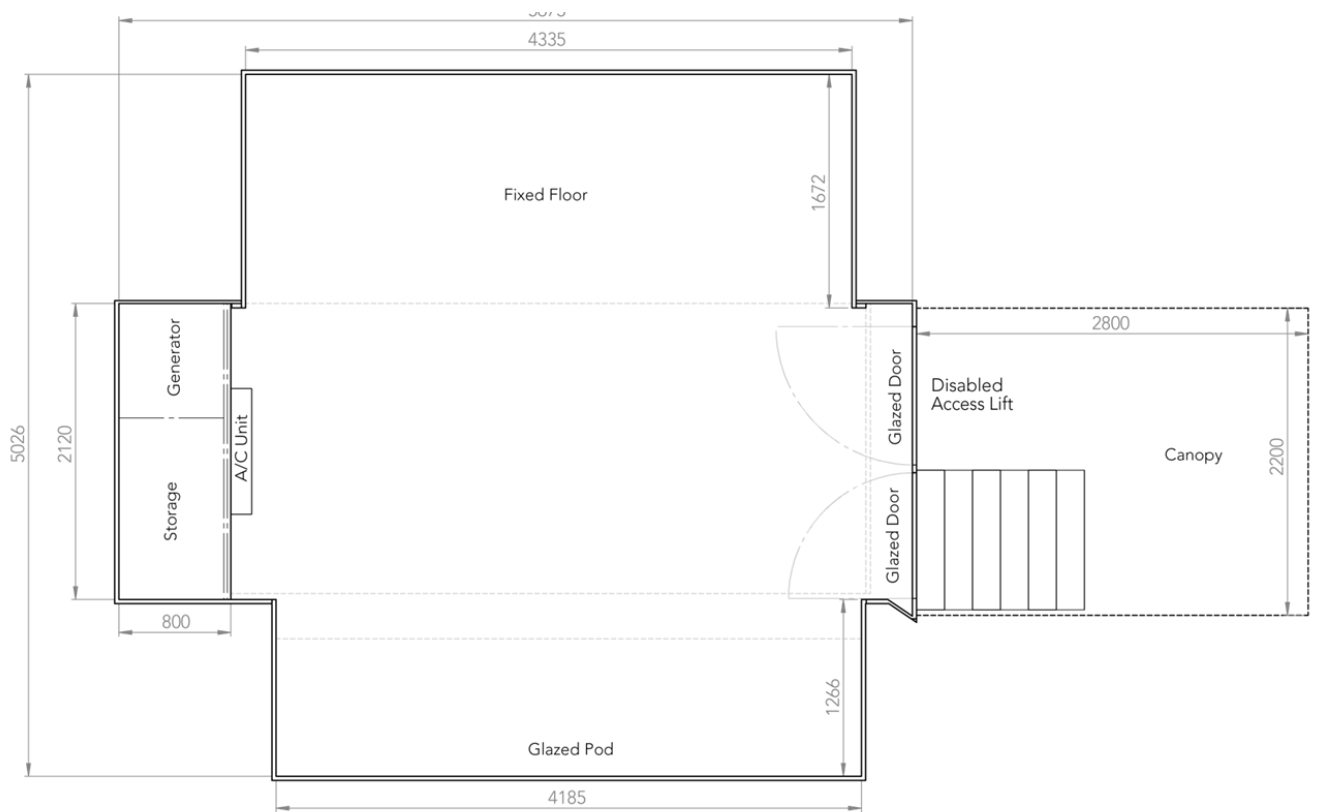
Our most agile exhibition unit. They are quick to set up and small enough to access even the most difficult sites without any compromise on impact. Ideal for mobile training programs, meetings and presentations, the Pathfinder is particularly effective in scalable multi-truck campaigns.

### Vehicle Features

- Air Conditioning with Climate Control
- Audio Visual – Amplifier/Ceiling speakers
- Mains connection – 32 Amp / Single phase mains connection
- Seating capacity for up to 15 people
- 12KVA Built-in Generator
- Vehicle build time of 1 hour with 1 SES unit manager.
- Hydraulically operated pod, gullwing and stage area
- Full disabled access



# Titan 78 Specification Sheet



## Size and Specifications

- Internal Floor space 22.5m<sup>2</sup>
- Flooring Type / Colour Light Wood Vinyl
- Vehicle Footprint 12m x 6m
- Internal Height (Pod Area) 2.06m / 2.05m
- Internal Height (Main body area) 2.2m
- External Height (Floor to Floor) 3.9m
- Vehicle Weight (With cab) 8.3 -9.5T