



Titan 56 Laboratory Specification Sheet



Titan 56 is a 13.6 m double gullwing Laboratory split into two sides and runs as two separate clean sides. This unit was used for Covid 19 testing. The unit is fully air-conditioned and has variable air systems inside each side of the trailer. Separate entrance and fire exit to both sides and each side has a sink and gown area to the entrance. This is a flexible medical unit that can be used for many different applications. The unit can be fully deployed in 180 minutes. Two matching units in stock.

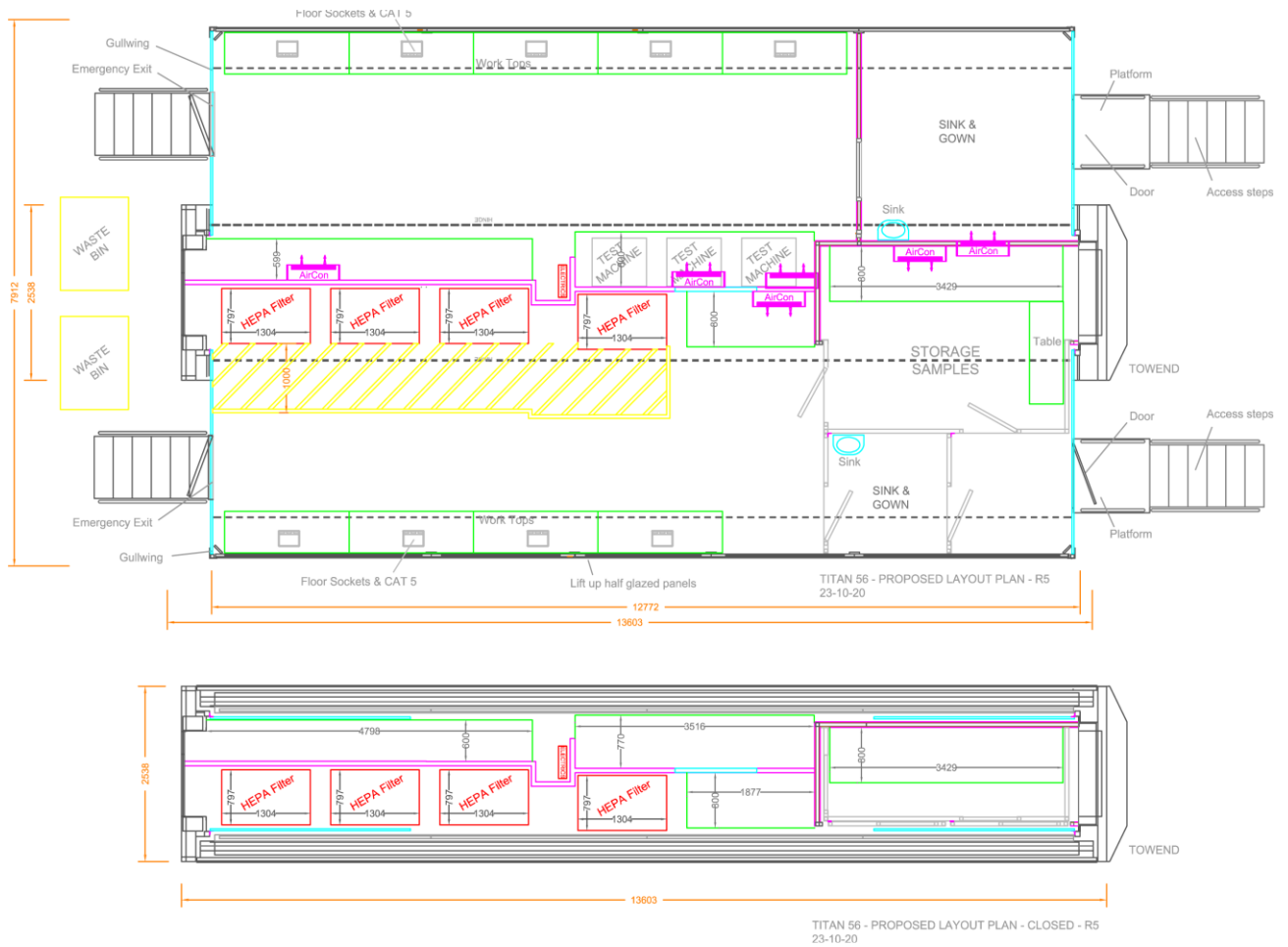


Vehicle Features

- Full trailer length double gullwing
- Low ride trailer
- Separate clean medical side
- Sink and gown area at entrance.
- Full-air circulation
- Air-conditioning
- Ready for any equipment to be installed.
- 2 SES Unit Manager 180 minute set up.
- Newly fitted in 2022
- Two matching units



Titan 56 Laboratory Specification Sheet



Size and Specifications

- Internal Floor space 101m²
- Internal Height in pod/gullwing 2260mm
- Internal Height main body 2500mm
- External Height 4.0m
- Power requirements 2x 63-amp three phase connections
- Flooring (None slip light blue safety flooring)
- Internal wall finish Clean white aluminium to walls and ceiling.
- External finish Clean White gloss finished ready for branding.

